

SANTA CRUZ COUNTY

SHERIFF CORONER



Black's Beach, Live Oak



ANNUAL REPORT

2010



CONTENTS

1. MESSAGE FROM THE SHERIFF	1
1.1 MISSION STATEMENT	2
2. ORGANIZATION DESCRIPTION	3
2.1 ORGANIZATIONAL CHART	4
3. OPERATIONS BUREAU	5
3.1 PATROL	6
3.2 COMMUNITY POLICING	7
3.3 INVESTIGATIONS	9
4. CORRECTIONS BUREAU	11
4.1 CUSTODY	12
4.2 COURT SECURITY	12
4.3 ALTERNATIVES TO CUSTODY	13
4.4 PLANNING FOR REALIGNMENT	14
5. ADMINISTRATION BUREAU	15
5.1 ONLINE FEATURES/SERVICES	17
5.2 RECRUITMENT AND HIRING	18
5.3 CENTER FOR PUBLIC SAFETY	19



MESSAGE FROM THE SHERIFF

Since I was appointed Sheriff-Coroner in 2009, it has been an unprecedented time of fiscal challenges as well as significant accomplishments. Following my election in 2010, we initiated a strategic planning process to identify key areas for advancement of our organization. In this 2010 annual report, you will read about positive change that has taken place in our organization as well as future plans that define our commitment to the community we serve. In the pages to follow, we will discuss the relocation of our headquarters to a facility in Live Oak as well as modernizing our operation through reorganization and technology improvements. I am very proud of the many accomplishments our office has achieved, some of which are highlighted here in my first annual report. It is my privilege and honor to serve as your Sheriff. With your continued support, and the dedication to duty by the personnel of the Santa Cruz County Sheriff's Office, we will continue to improve the safety and security of our community.

"THE SHERIFF'S OFFICE IS STEADFAST IN OUR COMMITMENT TO COMMUNITY POLICING—A VITAL PUBLIC AND POLICE PARTNERSHIP THAT WORKS FOR LONG-TERM SOLUTIONS TO SAFETY AND QUALITY OF LIFE ISSUES."



Black's Beach, Live Oak

Santa Cruz County Sheriff-Coroner Phil Wowak

MISSION STATEMENT

OUR MISSION IS TO BE UNITED WITH LOCAL COMMUNITIES TO MAKE SANTA CRUZ COUNTY A PLACE WHERE ALL PEOPLE CAN LIVE SAFELY.

RECOGNIZING THE CONTRIBUTION OF OUR STAFF

Looking back over the last fiscal year, I am very proud of the dedication and achievements of the Sheriff's Office staff who work tirelessly to ensure public safety. Santa Cruz County is fortunate to have such talented individuals, many of whom work behind the scenes or when most people are sleeping, often risking their own lives for the good of our community.

MEETING FINANCIAL CHALLENGES HEAD ON

Over the last year, budget cutbacks brought about the closing of the Rountree minimum security corrections facility in February 2010. We also experienced a significant staff reduction. We have reduced staffing from 370 employees to 350 with an additional 22 frozen vacancies. The silver lining of financial challenges is that new opportunities for improvements come to light. We've taken a hard look at our systems and work processes to determine the best way to deliver services with the available resources, and we have made many significant changes in the way we operate. I can say with confidence that we are now working smarter and harder. This is having both a positive impact on the day to day services we provide the community and public safety overall.

CREATING A MODERN ORGANIZATION ADAPTABLE TO CHANGE

A major accomplishment during this fiscal year has been implementing many technological improvements in our systems and processes that are enabling us to work more effectively and efficiently. By storing jail records digitally, we now have immediate access to information that enables better decision making and facilitates finding the right resources for a given situation. Medical records have also been stored digitally which means better patient care because doctors can quickly access patients' history and communicate with others involved in their care.

We have made the information that the public is looking for easily accessible by redesigning our website in 2010 (www.scssheriff.com). It offers many different types of sought-after information such as arrest logs, forms and documents, jail location, hours, visiting information, and unsolved homicides. A myriad of practical "how to" topics are a click away, including how to report a crime, evict a tenant, find out if someone is in jail, get fingerprints for employment, and how to become a volunteer. The improvements we have made enable us to provide better customer service at our five Sheriff's Office Service Centers. The bottom line benefit of greater efficiency in the Sheriff's Office is that staff has more time to spend on public safety, which is our main priority.

IMPROVING THE QUALITY OF LIFE THROUGH PUBLIC AND POLICE PARTNERSHIPS

Creating strong partnerships with local organizations and community groups like the United Way, Gemma, and Friends Outside continues to be one of our most important goals. Our partnership with the United Way 211 helpline program has been very successful. Following the Japanese tsunami in March 2011, the 211 system handled over 1,000 calls mostly related to the surge in Santa Cruz harbor that could have bogged down the 911 emergency service. Since the launch of the Smart on Crime initiative earlier this year, we are working with UCSC, the Probation Department, and other law enforcement agencies to find new ways to support people who will serve their sentences under county supervision as a result of the recent Supreme Court decision to reduce overcrowding in California state prisons.

BUILDING THE FOUNDATION FOR A SAFER COMMUNITY

Plans have begun to relocate our office to a facility in Live Oak, which has the greatest population served by our office. Relocating our operations to the unincorporated area moves us closer to the communities we serve, increases public safety, and promotes efficiency.

ORGANIZATION DESCRIPTION

AN ELECTED OFFICIAL, THE SANTA CRUZ COUNTY SHERIFF-CORONER IS THE COUNTY'S CHIEF LAW ENFORCEMENT OFFICER, WITH OVERALL COMMAND OF THE SHERIFF'S OFFICE. SHERIFF'S OFFICE EMPLOYEES ARE RESPONSIBLE FOR LAW ENFORCEMENT SERVICES, INCLUDING PATROL AND CRIMINAL INVESTIGATIONS IN THE COUNTY'S UNINCORPORATED AREAS, OPERATING THE ADULT JAIL SYSTEM, PROVIDING COURT SECURITY FOR THE SUPERIOR COURT, AND CORONER AND CIVIL SERVICE THROUGHOUT THE COUNTY.

THE SHERIFF'S OFFICE IS DIVIDED INTO THREE DISTINCT BUREAUS: ADMINISTRATION, CORRECTIONS, AND OPERATIONS. EACH BUREAU IS OVERSEEN BY A CHIEF DEPUTY AND IS ASSIGNED A VARYING NUMBER OF LIEUTENANTS, SERGEANTS, DEPUTIES, AND CIVILIAN EMPLOYEES TO FACILITATE THE OPERATION OF THE SPECIFIC BUREAU.

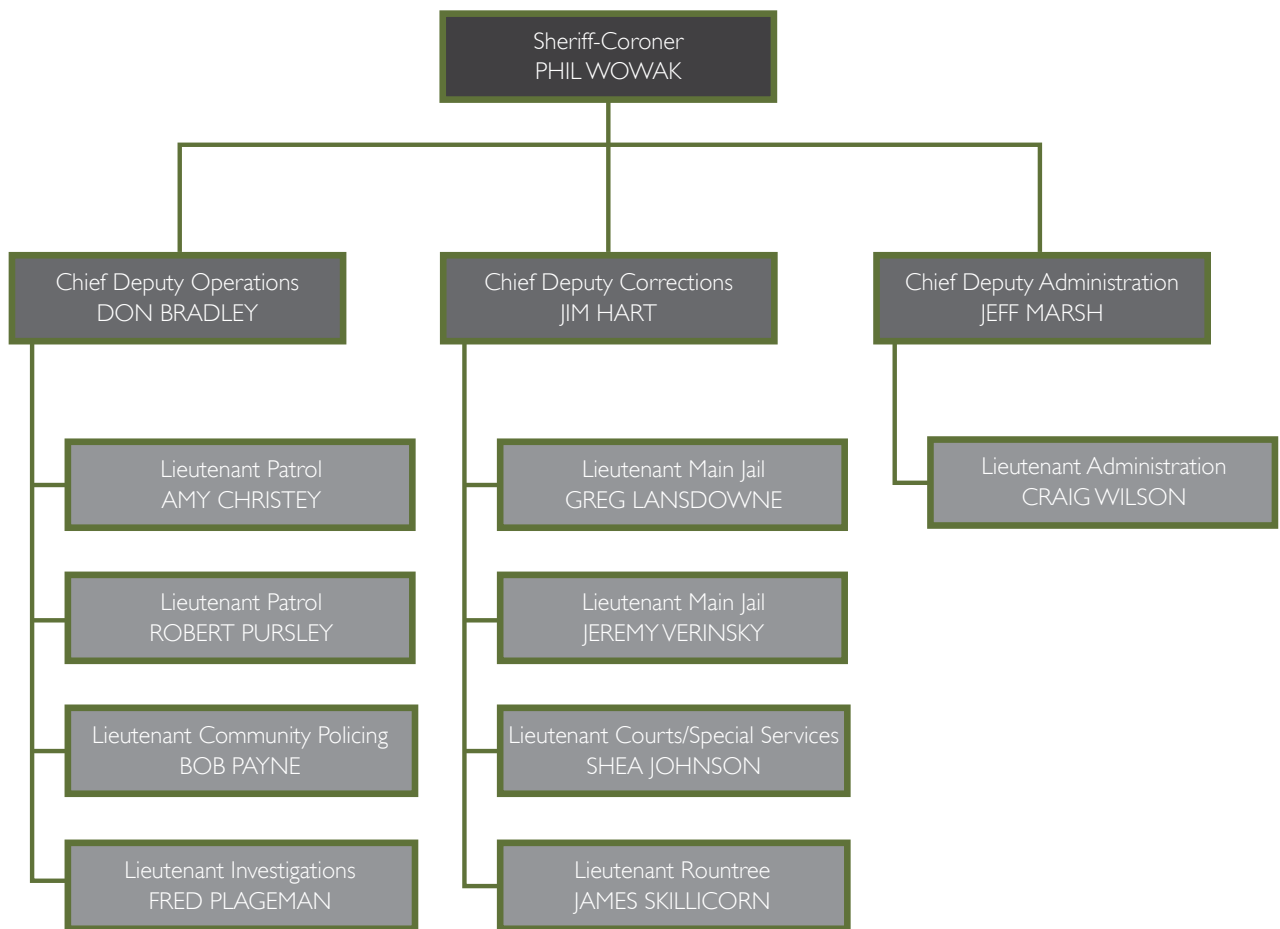


Santa Cruz County has a resident population of 262,382 (2010 US Census Bureau). The county is 441 square miles in size, with 29 miles of beaches. It is comprised of four incorporated cities and 13 unincorporated areas: Aptos, Ben Lomond, Bonny Doon, Boulder Creek, Brookdale, Corralitos, Davenport, Felton, Freedom, La Selva Beach, Rio Del Mar, Soquel, and Zayante. About half of the county's population resides in the unincorporated area which is served by the Sheriff's Office.



The natural beauty and mild year-round temperatures result in a large increase in the population during the summer months and most holidays. The Santa Cruz Beach Boardwalk, 22 state parks, Roaring Camp Railroad, and the abundance of accessible beaches and trails are some of the top tourist destinations in Northern California. During large sporting events and the summer months, the resources of all county law enforcement agencies are engaged.

ORGANIZATION CHART FOR THE COUNTY SHERIFF'S OFFICE



OPERATIONS BUREAU

THE OPERATIONS BUREAU CONSISTS OF DEPUTIES WHO PATROL OUR NEIGHBORHOODS, DETECTIVES WHO INVESTIGATE MAJOR CASES, AND COMMUNITY POLICING OFFICERS WHO WORK WITH THE COMMUNITIES AT OUR FIVE SHERIFF'S OFFICE SERVICE CENTERS LOCATED THROUGHOUT SANTA CRUZ COUNTY.

Patrol cars



PATROLLING OUR STREETS 24/7 TO KEEP NEIGHBORHOODS SAFE

The Patrol Division is the main operational center of the Sheriff's Office. It provides around-the-clock, first-responder 911 emergency services, non-emergency services, and general law enforcement in the 11 geographic areas located in the unincorporated area of Santa Cruz County. The Patrol Division is currently staffed by 60 Deputies, seven Sergeants, and two Lieutenants. Patrol Sergeants play a key role in operations; they allocate resources for each shift, evaluate complex cases, and transition enforcement and problem solving strategies from one shift to the next.

The Patrol Division operates according to the Community Policing/Problem Oriented Policing model. Deputies are regularly assigned to the same beat so they become familiar with the neighborhoods they patrol in order to develop long-term solutions to recurring problems. Community Policing is further enhanced through the support of Community Service Officers at County parks and School Resource Officers assigned to several county schools.

IN 2010, DEPUTIES HANDLED 94,299 CALLS FOR SERVICE AND WROTE 16,019 INITIAL AND SUPPLEMENTAL REPORTS.

SERVICE CALLS BY GEOGRAPHIC AREA 2010

BEAT	CALLS	% OF TOTAL
NORTH COAST	1,750	2%
NORTH SAN LORENZO VALLEY	8,382	9%
SOUTH SAN LORENZO VALLEY	10,062	11%
LIVE OAK EAST	9,666	10%
LIVE OAK WEST	14,152	15%
SOQUEL	12,084	13%
SUMMIT	1,753	2%
APTOS NORTH	11,758	12%
APTOS SOUTH	6,900	7%
PAJARO VALLEY NORTH	8,430	9%
PAJARO VALLEY SOUTH	3,364	4%
MISCELLANEOUS	5,998	6%
TOTAL CALLS FOR SERVICE	94,299	100%

INCREASING PROFICIENCY DESPITE BUDGET CONSTRAINTS

Despite budget constraints, the combination of training, new technological tools, and personal dedication has enabled our Deputies to become more proficient in key duties such as collecting evidence, developing safety plans for victims and witnesses, conducting interviews, writing detailed reports, preparing court orders and documents, and following through with suspect apprehensions. A domestic violence call, or call regarding a victim of a battery with injury, is no longer a basic investigation but a complete package for prosecution. Deputies have also advanced in the use of tactics where teamwork and coordination ensure a greater measure of success while reducing risk for everyone involved.

Patrol Deputies receive mandated training and advanced officer training to keep perishable skills up to date. The Patrol Division operates a Field Training Program where more experienced, specially certified Field Training Officers teach on-the-job training skills to newly hired officers. A carefully orchestrated curriculum is utilized so that these Deputies achieve the expected level of performance.

The training budget was cut by 50% in 2010 in order to furlough deputies without reducing patrol coverage. To curtail the impact, Patrol Sergeants conduct more training during roll calls at the beginning of shifts, and more on-the-job training.

COMMUNITY POLICING: WORKING HAND-IN-HAND WITH THE COMMUNITY

The Community Policing Division provides long-term solutions to identify and alleviate the causes of crime and issues affecting citizens' sense of security in Santa Cruz County. Division staff personally interact and work with groups, businesses, organizations, and individuals in the community.

The Division operates five Sheriff's Office Community Service Centers that promote communications and develop connections within the communities served. The Centers are located in residential areas of San

Lorenzo Valley, Live Oak/Soquel, Aptos, and Freedom, and one Center is located on the Cabrillo College campus in Aptos.

They provide neighborhood watch, bicycle registration, fingerprinting, vehicle abatement, vacation watch, and are a convenient meeting place for residents and law enforcement staff to discuss neighborhood issues. All of the Centers are available to serve as critical incident coordination centers during emergencies.



Deputy Baldrige and Tomi

PROVIDING CRITICAL, SPECIALIZED SERVICES WHEN NEEDED

The Patrol Division supports special operations teams including the Canine Unit, Coast Patrol, Air Squadron, Bomb Team, Search and Rescue Team, Motorcycle Posse, Mounted Horse Posse, Special Weapons and Tactics Team, Crisis Negotiation Team, Tactical Team, and Reserve Deputies. All members of the Sheriff's Office receive training for Tactical Crowd Control.

ESTIMATED SERVICES PROVIDED BY SHERIFF'S OFFICE SERVICE CENTERS 2010-2011

CHILD IDENTIFICATION	750
MISSING PERSONS FOLLOW-UP	625
CITATION SIGN-OFF	200
COMMUNITY MEETINGS	180
WALK-IN CLIENTS	5,600
TELEPHONE CALLS RECEIVED	6,300

Staff that work out of the Centers include Sheriff's Sergeants, School Resource Officers, Rural Crimes Deputies, and Community Service Officers (CSO) who patrol parks and tow abandoned vehicles. Service Center staff is supplemented by a strong cadre of volunteers who handle many different tasks. We are grateful to these dedicated and capable volunteers

who enable us to continue to deliver vital services during these tough economic times.

An example of our collaborative relationship with the community is the Sheriff's Activity League (SAL), which engages youth in positive activity such as supervised sports, field trips, and other activities.

VOLUNTEERS PROVIDED OVER 12,000 HOURS OF SERVICE IN 2010.

KEEPING CABRILLO COLLEGE CAMPUS SAFE AND COMFORTABLE

Cabrillo College contracts with the Sheriff's Office to provide crime prevention and law enforcement services on its campuses. The Service Center's mission is to make the campus a place where all people can attend safely without fear. Our staff continues to handle a large number of demands through the dedication of a Sergeant, a Deputy, a full-time Security Officer, and a part-time Security Officer.

WALK-INS	8,253	 <p>Cabrillo College Students</p>
PHONE CALLS	5,976	
CALLS FOR SERVICE	3,218	
LIVE SCAN FINGERPRINTS	4,796	
PARKING CITATIONS	7,181	
CRIME REPORTS	157	
CITATION APPEALS	1,747	



INVESTIGATIONS DIVISION: HANDLING COMPLEX FELONY CASES

The Investigations Division is assigned to investigate complex criminal matters not routinely handled by the Patrol Division. Detectives in this division require special technical skills and training. The major divisions are: Crime Scene Investigation (CSI), Coroner, Robbery/Homicide/Domestic Violence Section (also referred to as Persons Crimes), Sexual Assault/Physical Child Abuse, Property Crimes, and Narcotics Enforcement Team.

The focus of this division is to complete follow-up on as many felony cases as possible. The division must assess and evaluate cases as they are received to look

for solvability, type of crime, impact to the community, and other factors. Homicide cases are complex and time-consuming to investigate.

The CSI Section is recognized county-wide as the subject matter experts in crime scene investigation, and frequently the team is called upon to assist with cases in other jurisdictions and to testify in court. When a major case occurs such as a homicide, the entire Investigations Division will work the case around the clock for the first 48 to 72 hours. Our task force approach greatly enhances our ability to solve major crimes



Facial reconstruction

FACIAL RECONSTRUCTION OF SKULL LEADS TO ARREST

The Operations Bureau played a key role in solving a recent missing persons case which began when hikers reported a skull near a forest access road off Highway 9. Staff from Investigation, CSI, and Forensics participated in the investigation along with UCSC Forensic Osteological Investigations Laboratory. It was determined that the decedent was a Caucasian or Asian female of 25-50 years. A facial reconstruction was created by a forensics firm and distributed to the media.

The breakthrough came when the Volunteer Missing and Unidentified Persons Coordinator for the Sheriff's Coroner Unit found a possible match in the data for date and age range for Jane Doe. He contacted the Fremont Police and discovered that DNA samples had only been sent to the Santa Clara Sheriff's lab, not to the Department of Justice (DOJ). After Fremont Police sent samples to DOJ, Jane Doe was identified as a woman who was believed to have been killed by her husband. Within weeks, the suspect was arrested for homicide.

SIGNIFICANT CASES SOLVED BY THE INVESTIGATIONS DIVISION

Over the last year, the Sexual Assault Unit made several arrests including two school teachers, one for the possession of thousands of images of child pornography and the other for abuse. The Property Crimes Section investigated many theft, burglary, elder abuse, and cyber crimes. In one case of note, detectives gathered information about a series of residential

jewelry burglaries which led to the arrest of five gang members for seven burglaries.

The Narcotics Enforcement Team has served over 71 search warrants, and seized 51 guns, an estimated 366 pounds of processed non-medical marijuana, 2,830 grams of methamphetamine, cocaine and heroin, and approximately \$692,849 in drug proceeds from dealers.

IT TAKES AN AVERAGE OF 2,000 PERSON-HOURS TO PROPERLY INVESTIGATE A HOMICIDE CASE.



SEARCH AND RESCUE

In the afternoon of June 5th 2010, the Sheriff's Office Patrol received a call that an 85-year-old man who suffered from memory loss and Alzheimer's had walked away from his residence at the base of the Forest of Nisene Marks. He had been missing for 90 minutes. Within two and a half hours, Search and Rescue Deputies on Sheriff's Office ATVs located, and returned safely home, the tired and confused senior who had walked three miles into the park.

Our County Search and Rescue team completed seven other successful searches this year. The team is comprised of a full-time Sergeant, several search and rescue trained Deputies, and a group of dedicated trained volunteers from all walks of life. The team has the ability to quickly deploy resources to locate missing at-risk people with ground teams, motorcycle teams, horse teams, ATV teams, and air support units.

CORRECTIONS BUREAU

PROVIDING SECURE CONFINEMENT OF INMATES AND PROTECTING PUBLIC SAFETY, THE CORRECTIONS BUREAU CONSISTS OF SIX DIVISIONS: MAIN JAIL OPERATIONS, ROUNTREE JAIL OPERATIONS, MEDICAL SERVICES, FOOD SERVICES, COURT SECURITY/TRANSPORTATION, AND WORK RELEASE/RECEPTION.



Correctional Officer Moreno

The mission of the Corrections Bureau is to protect the public by providing the secure confinement of persons committed to the custody of the Sheriff in a safe and humane environment. Staff are committed to three primary responsibilities: to maintain secure jail facilities to protect the public, to provide a safe environment for staff, inmates, and visitors, and to provide quality educational, health, and vocational programs that promote the return of inmates to the community in a law-abiding and constructive manner.

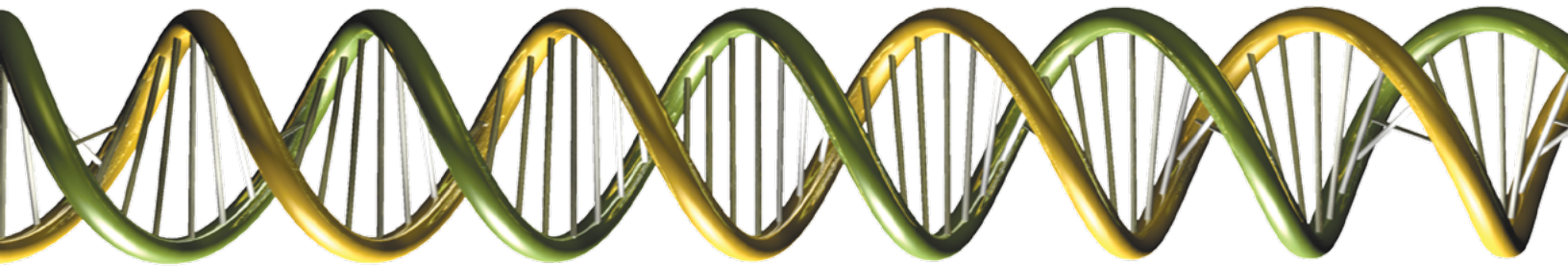


Main Jail vehicle sallyport

The three adult jail facilities operated by the bureau are the Main Jail on Water Street, the Blaine Street Women's facility in the City of Santa Cruz, and the Men's Medium Security facility on Rountree Lane near Watsonville. A Minimum Security facility at the Rountree campus was closed in January 2010 due to budget cuts, and inmates were relocated to the direct supervision unit inside the Men's Medium Security facility.

DNA IS COLLECTED FROM QUALIFYING INMATES WHEN THEY ARE BOOKED INTO THE MAIN JAIL. THE DNA DATABASE SYSTEM WAS ONE OF SEVERAL SIGNIFICANT TECHNOLOGICAL UPGRADES IMPLEMENTED IN 2009 - 2010 TO BETTER MANAGE INMATE INFORMATION AND IMPROVE CORRECTIONS OPERATIONS.

During 2010, Correctional Officers collected 568 DNA samples from qualifying offenders at the County Jail. Samples are sent to the California Department of Justice where they are analyzed and uploaded to a database so they can be compared to biological evidence previously collected at major crime scenes such as murder, sexual assault, and gang crimes. Since the DNA database was implemented in 2004, 16,833 DNA identifications have been made in California.



PUTTING CUSTOMER SERVICE FIRST

The Corrections Bureau continues to put customer service first. Our professional, dedicated Main Jail/Blaine Street Jail reception staff works five days a week scheduling inmate visits with families, and answering a variety of questions from callers and visitors.

MAINTAINING A SAFE AND HUMANE ENVIRONMENT FOR INMATES

The Rountree Facility offers inmates the opportunity to participate in a variety of educational programs to help prepare them to enter the job market, including a GED program, automotive body shop/repair, and computer training. The Corrections Bureau also utilizes several cost-effective alternatives to sentencing and incarceration such as work release, community service, and restitution.

The Work Release program is an option for convicted defendants who have been sentenced to serve county jail time, yet meet specific criteria that ensure public safety. Participants pay a nominal fee to support the program. They are assigned to duties such as landscaping, light maintenance, or picking up litter at one of 52 sites throughout the County, which include animal shelters, beaches, parks, Goodwill, Graybears, and food banks. Three Corrections Officers supervise all participants.

The Work Release Extension program, introduced in 2009, has continued to expand, allowing more inmates to be released from custody to finish the remainder of their custody time to work in the community.

MEETING THE NUTRITIONAL AND MEDICAL NEEDS OF INMATES

The Food Services Manager and nine cooks serve nutritionally balanced meals three times a day to inmates, as mandated by the California Code of Regulations. The Food Services Team was recognized as a Clean Ocean Business by the City of Santa Cruz Public Works Department in 2009 and continues to maintain high standards in their operations.

Our medical team is comprised of a Medical Director, two Assistant Directors of Nursing Staff, eight Registered Nurses, three Licensed Vocational Nurses, and three Medical Assistants. The team works seven days a week and provides 24-hour coverage. Their efforts are supported by our Health Services Crisis Intervention Team. New protocols that delivered better care were recently implemented. A new medical records computer system will result in improved coordination in treating inmates, prescribing medications, and filling prescriptions.



MAINTAINING SECURITY IN COURTS

People need to feel safe while seeking justice through the courts. The Corrections Bureau is responsible for transporting inmates to the local courts, maintaining security in the courts, and transporting prisoners to and from out-of-county facilities.

The Superior Court of Santa Cruz contracts with the Sheriff's Office to provide security services. Sheriff's Deputies and Security Officers staff the two court-

houses within the county where they screen for weapons and contraband, escort defendants to the appropriate courtroom for appearances, provide security for their assigned judge and court staff, as well as assist the public with accessing the courts. Deputies take pride in their work as Court Bailiffs, and continue to provide excellent service to the Superior Courts and our community.

288,773 PERSONS WERE SCREENED AT COURT ENTRANCES IN SANTA CRUZ AND WATSONVILLE, RESULTING IN THE DISCOVERY OF 2,993 EDGED WEAPONS AND 13 FIREARMS.

JAIL OVERCROWDING AND ALTERNATIVES TO CUSTODY

The county jail system, as currently staffed, is rated to house 453 inmates in three separate facilities.

The Santa Cruz County Sheriff's Office continues with efforts to address capacity issues in conjunction with the Probation Department and input from the community.

In addition to court ordered accelerated releases, expanded Work Release, and Serial Inebriant and Pretrial Release Programs, the Sheriff's Office recently partnered with Probation in grant-funded efforts to focus on violent offenders and best practices to reduce recidivism.



HELPING INMATES GAIN IN-DEMAND JOB SKILLS

Many businesses are reluctant to hire anyone with a criminal record. They worry that the ex-offender will get into trouble again. The challenge of finding employment is compounded by the fact that there are fewer jobs available today due to the current economy.

Studies show that incarcerated individuals who participate in educational and job training programs before release have substantially lower rates of recidivism than those who do not. The Sheriff's Office offers a variety of academic and vocational classes to help inmates secure lasting and satisfying jobs. These programs are financed by the Inmate Welfare Fund, which receives its revenue from commissary and telephone sales.

One such offering is the auto facility program, where inmates not only learn to repair and restore cars, but also gain self-esteem for a job well done. Inmates beautifully restored a classic 1957 Ford patrol car. The car stands as a tribute to the Sheriff's Office's commitment to empower inmates with valuable life skills.

One such offering is the auto facility program, where inmates not only learn to repair and restore cars, but also gain self-esteem for a job well done. Inmates beautifully restored a classic 1957 Ford patrol car. The car stands as a tribute to the Sheriff's Office's commitment to empower inmates with valuable life skills.

PLANNING FOR REALIGNMENT

The state of California's 2011-2012 budget contains actions to reduce the state deficit and overcrowding in state prisons. AB 109, also known as "realignment," will shift the responsibility for managing some non-violent, non-serious, and non-sex offenders from the state prison system to the county level. These inmates, called "Non-Non-Nons," must also have no prior criminal history with a felony "strike" conviction.

The impact to Santa Cruz County from realignment will be significant and will require a number of system changes to Corrections Bureau operations. To meet the heightened demands of the times, the Sheriff's Office

and Santa Cruz County leaders, with input from community efforts, are developing a comprehensive plan to improve our jail and probation systems, and educate and reform the inmates we incarcerate.

Some of the concepts discussed include electronic monitoring of low risk offenders, expansion of work furlough and work release programs, and a comprehensive educational program designed to reduce the recidivism rates of offenders. These discussions will soon translate into a strengthened Corrections system geared toward reducing crime, and focused on public safety and recidivism reduction.

NEW COALITION GETS "SMART ON CRIME"

The Sheriff's Office is participating in a partnership with local government, academics, and community residents called Smart on Crime. The purpose is to explore strategies for cost-effective, evidence-based practices to reduce state prison overcrowding, help reduce recidivism of county residents, and promote public safety.

The stimulus for this initiative was this year's US Supreme Court decision ordering the state of California to decrease its prison population to reduce overcrowding, which will shift the responsibility for managing some individuals convicted of non-violent, non-sexual, non-serious offenses to the county.

The first in a series of Smart on Crime public meetings was held this spring at Live Oak Elementary School. Sheriff-Coroner Phil Wowak, UC Santa Cruz Professor Craig Haney, and Chief Probation Officer Scott MacDonald spoke about the challenges and opportunities presented by the mandate. Meetings will continue throughout the year.



GEMMA GIVES WOMEN A NEW LEASE ON LIFE

When Molly Relyea walked out of jail on March 4, 2010, she had nowhere to go. She called her Pastor who gave her a room for the night. The next day she called Gemma, a 10-week day program that teaches women practical skills for successful re-entry into the community. She was able to move into Gemma House, which accommodates six to 10 women with long incarceration histories, who would otherwise be homeless. She immediately felt accepted.

Today, after living at Gemma House for over a year, Molly is excited about transitioning to Gemma's first independent living house. She has two part-time jobs and does volunteer work in the community as part of the program. She is enrolled to start Cabrillo College in the fall where she will be working to earn a degree in human services. Her dream is to become a high school drug counselor and she is confident that she will attain her goal. Molly will be able to receive additional support through the Gemma Continuing Care program. She credits Gemma for believing in her and providing the support she needed. Her new philosophy of life: "You change and your circumstances change!"

ADMINISTRATION BUREAU

THE ADMINISTRATION BUREAU PROVIDES THE TOOLS AND SUPPORT THAT DEPUTIES AND CORRECTIONAL OFFICERS NEED TO DO THEIR WORK IN SERVING THE COMMUNITY.



Photo credit: Covello and Covello

MAINTAINING SERVICE EXCELLENCE

Law enforcement work isn't always dangerous, but Deputies must always be prepared to react appropriately to volatile and unpredictable situations. Nationally, line of duty deaths were up 37% in 2010 over the previous year. Our Deputies continuously train to maintain and improve the skills necessary to preserve public safety, investigate criminal activities, solve community problems,

and comply with requirements set by the California Commission on Peace Officers Standards and Training.

This year's training curriculum included Firearms, Taser, Defensive Tactics, First Aid & CPR, Tactical Communications, Domestic Violence Investigation, Community Policing Techniques, Ethics, and Emergency Preparedness.



PROVIDING EASY ACCESS TO INFORMATION AND SERVICES

Crime-related stories frequently lead local daily news reports; people are concerned about safety and the security of their neighborhoods. The Press Information Officer is the link between what happens – from murders to natural disasters – and the media that reports it to the public. All media releases and arrest logs are made available to view online on our newly enhanced website (www.scsheriff.com).

Our website provides a convenient way for the public to interact with us and get the information they are looking for. Over the last year we have added to the website many new types of information. You can now file crime reports, view crime maps of your neighborhood, report abandoned vehicles, request a vacation check of your home, check arrest warrants, see if someone is in custody, and communicate with us electronically.

THESE ARE SOME OF THE FEATURES NOW AVAILABLE ONLINE:

ABANDONED VEHICLES – report abandoned vehicles for towing

ARREST WARRANTS – check to see if there is a warrant on any person

CRIME MAPPING – see what crimes are reported in specific locations

FILE POLICE REPORTS – report certain kinds of non-violent misdemeanors conveniently

JAIL INMATE LOCATOR – check if someone is in custody

JAIL TOUR – sign up for a free tour of the local county jail

MISSING PERSONS SEARCH – check to see if someone is reported to be a missing person

SEX OFFENDERS SEARCH – check to see if someone is a convicted sex offender

VACATION CHECK REQUEST – request that Deputies or volunteers check on your home while you are away

VICTIM NOTIFICATION REGISTRATION (VINE) – get notification if someone who is in jail is released or transferred

ARREST LOGS – see a list of all persons who were arrested on a daily basis

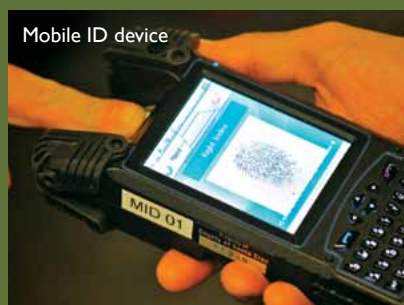
CRIME STATISTICS – view numbers of reported crimes summarized by month

FORMS AND DOCUMENTS – access the most commonly requested forms

PRESS LOGS – see information related to reports taken by the Sheriff's Office on a daily basis

PRESS RELEASE – view official agency press releases of major activities and events

UNSOLVED HOMICIDES – view a list of selected unsolved homicides to encourage the development of new information or tips



NEW MOBILE FINGERPRINT DEVICES EXPEDITE IDENTIFICATION

The Sheriff's Office, in partnership with the Santa Cruz, Watsonville, Scotts Valley, and Capitola Police Departments, launched the Mobile Identification Pilot Project in the fall of 2010. Each agency received two mobile identification devices. The devices enable Deputies to perform "real-time" fingerprint acquisition in the field when there is no form of identification, or the identification is questionable. The prints are searched against local, state, and federal fingerprint databases.

"Hit" responses along with a mugshot photograph, or "no hit" responses, are typically received within one minute. Approximately 50% of the persons searched to date have been positively identified through our local fingerprint database. As we expand our fleet of devices and our search capabilities to the state and federal level in the summer of 2011, we expect to increase positive identifications in the field.

A new hand-held device deployed in the field was recently used to identify a deceased local gang member who was incorrectly identified by witnesses. This expedited and completely changed the direction of the investigation. The device was also used to identify a drug dealer with warrants, who when contacted, gave false and misleading information before trying to flee. He was successfully identified via the device.

HIRING THE BEST AND BRIGHTEST

“MAINTAINING THE POLICE WORKFORCE LEVEL IS ONE OF THE MOST SALIENT CHALLENGES FACING LAW ENFORCEMENT TODAY. IN THE LONG RUN, BOTH THE SUPPLY OF AND DEMAND FOR QUALIFIED OFFICERS ARE CHANGING IN A TIME OF INCREASING ATTRITION, EXPANDING LAW-ENFORCEMENT RESPONSIBILITIES, AND DECREASING RESOURCES.”

– Rand Center on Quality Policing, 2010

With so many police departments coping with hiring freezes or layoffs, one would think it would not be difficult to hire sufficient numbers of officers to maintain our staffing levels, but that has not been our experience. The Recruitment and Hiring Unit advances only those candidates who will uphold the solid reputation our agency has earned for quality public service. Our search for excellent, community-minded candidates continues. Recent hires include Deputy Margo Jay, whose parents were police officers, and Deputy Roger Galvin, who attended UCSC and studied in Europe.

INSPIRING CONFIDENCE IN OUR STAFF AND SERVICES

Peace Officers are sworn to protect everyone's rights. The men and women of the Sheriff's Office take this charge seriously and we have adopted internal safeguards to discourage abuses of authority by our officers. Complaints regarding such abuses are taken seriously and are thoroughly investigated by the Professional Standards and Conduct Unit.



Deputy M. Pursley
with computer tablet

COMPUTER TABLETS INCREASE EFFICIENCY

In December 2010, the Sheriff's Office purchased 134 computer tablets with asset forfeiture funds. These

tablets enable Deputies to easily and quickly access county resources and perform various functions from anywhere the internet is available. Some of the tablets have built-in broadband so Deputies can connect from anywhere in the field.

Running on the latest Windows 7 operating system, the small, lightweight tablets can be used to take notes and submit incident reports and fingerprints. The tablets also have built-in card readers for viewing photos directly from the camera.

BUILDING THE FOUNDATION FOR A SAFER COMMUNITY

We are excited as the planning moves forward to relocate the Sheriff's Office to a mid-County facility in the Live Oak-Soquel Redevelopment Project Area. On June 20, 2011, the Santa Cruz County Board of Supervisors approved \$44 million for this project. Our new offices will be within one mile of the 41st Avenue and Soquel Avenue exits off Highway 1. With this move we will be better able to respond to county-wide calls for service, improve our abilities to process and store crime scene evidence, and centralize our functions and major activities within the communities we serve.





SANTA CRUZ COUNTY SHERIFF'S OFFICE

701 Ocean Street Room 340
Santa Cruz CA 95060

Phone: 831.454.2242

www.scsheriff.com